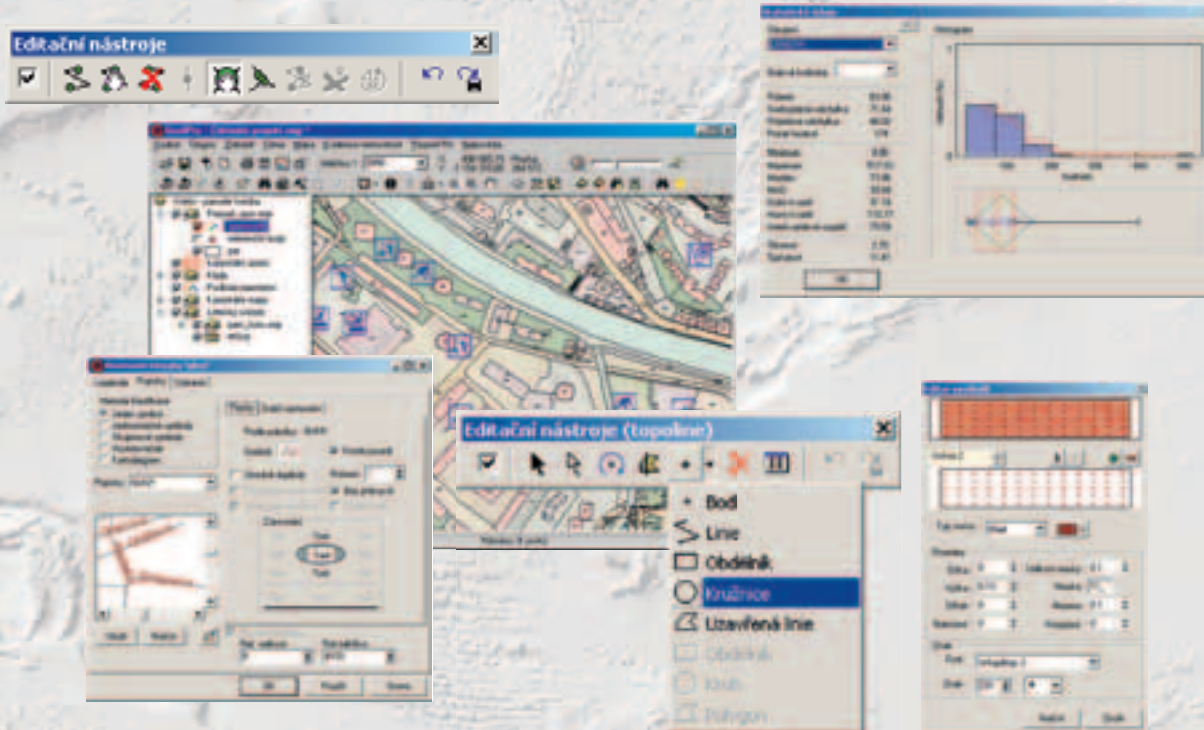


OPEN MODULAR SYSTEM FOR PROCESSING GEOGRAPHIC DATA

GISel is a powerful desktop "viewer" of geographic data with modular structure (the possibility of expanding basic functions by means of plug-in modules), which was designed on the MapObjects platform and incorporates additional options of data editing, spreadsheet processing, etc. for working with the MapObjects family of products.



Basic Characteristics:

- Analysing and editing geographic data
- Utilising MapObjects runtime by ESRI
- Capable of working with various types of vector (shapefile, coverage, dgn, dwg, and dxf) as well as raster (GIF, JPEG, and MrSID) data, including (semi)transparent graphic representations
- Seamless operation when working with large maps, thanks to dynamic switching between the data sources
- Saving spatial data into a database (ArcSDE, ArcSDE Direct Connect)
- On-line data projection – the possibility of working with data in different systems of coordinates in a single map window
- Possibility of creating thematic maps
- General query tools, including spatial queries
- Legend arranged in a tree structure
- Easy handling
- Open and published COM interface
- Various optional modules

Editing Characteristics (for the GISel Pro only):

- Editing shapelite and ArcSDE themes
- Geoprocessing operations (merge, intersect, union, etc.)
- Multi-user editing with the lock-image-when-editing feature
- Topology editing of "line graph"
- Possibility of editing tables attached to a theme

User's Graphics and Saving Cut-outs:

- A function attaching a name to the selected cut-out and saving it, including all the settings of the composition of the map
- User's graphics stored in a database
- Automatic assignments of attributions to geoelements
- Copying geoelements along with their tags into user's graphic environment
- Attaching annotations and links to elements of the user's graphics

Other Advanced Functions:

- Printouts of maps in the defined scale, including the legend and the north arrow
- Large-scale mosaic printing
- Supporting the arrangement of the legend in several columns
- Possibility of pyramidal catalogue of pictures provides for effective work with aerial views covering large area even with common formats, such as JPEG
- Composite themes make it possible to view, query and edit a theme comprising different types of elements
- Supporting ADO database drivers for attached database tables
- Interlinking partial map compositions

GISel

T-MAPY spol. s r.o.
Czech Republic

e-mail:
marketing@tmapy.cz
Internet site:
<http://www.tmapy.cz/>

Hradec Králové
Nezvalova 850
500 03 Hradec Králové

Phone: +420-495513335
Fax: +420-495513371

Praha
Brabcova 1159/2
147 00 Praha 4

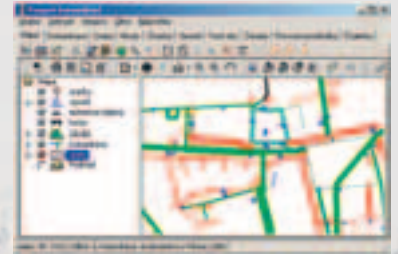
Phone: +420-241432999
Fax: +420-241433872

<http://www.tmapy.cz/>

Pasport Module GKomPas

GKomPas is an application designed to keep local roads passport data pursuant to the act on roads and implementing regulations (Act No. 13/1997 Coll. and Decree No. 104/1997 Coll.). The application adds further parameters to the passport, such as inventory of basic road parts and fittings (vertical traffic signs, gullies, structures registered pursuant to the Bridge Standard (ČSN - Czech national Standard 73 6220) and other technical structures, such as supporting and retaining walls, handrail, crash barriers, gutter bridges, etc.). Concerning the execution of road administration and property administration, GKomPas is designed to maintain the records of executed or planned works on roads (cross-cut, repairs, building program) as well as keeping records of any maintenance carried out on the road or its fittings. GKomPas works with the GISel.ocx component and allows the employment of all GISel modules (processing cadastre data, territorial identification, etc.).

The GKomPas application has been designed in cooperation with MK Consult.



Greenery Pasport

Greenery passport offers a comprehensive solution to the inventory of urban greenery and maintenance planning. It provides for the computation of costs per area (land plot), monitoring of the area's dendrology, formation/modification of price lists, description/modification of actions, scheduling of maintenance, and computation of maintenance costs for a group of areas.

The database part plays a major role. In terms of the database sub-system, we are currently using a solution delivered by two well-known firms from the greenery passport business - Design of gardens, landscaping and GIS, and Florart/Help Forest solutions.



“Universal Hotlink” – plug-in

The universal hotlink allows simpler actions related to passports to be dealt with as a whole. This module enables the user to define the structure of the recorded data as well as defining the data presentation mode (form). Individual geoelements can then be assigned one or more records and these can be assigned as many images or files as you wish. The record can involve items from the attached tables – code lists. The main window of this module transparently renders not only the content of basic attributes, but also the file list, image list and a field for comments. An application associated with a file in the system can be launched simply by clicking.



Other GISel plug-ins:

- SIRIS KN (the client of the system for processing real property registry data in a new interchange format VFK)
- GEN (real property registration system processing the data in the old interchange format DBF)
- ZUZI (territorial identification)
- RADNICE VERA - server (linkage of the agenda to GIS)
- RADNICE VERA - client (linkage to “public interface”)
- ISEN – the client of the Starosta system by Merit a.s.
- Building Authority VITA – client
- Roads pasport
- Communication interface
- sporting grounds pasport
- Memorials and memorial places pasport
- Street lighting pasport
- Service module
- Locality search in ÚPD
- Inventory of national cultural heritage
- Spatial coincidence
- Cartogram
- System hotlink

Technical Requirements

Operating System: Microsoft Windows 98/2000/XP

Processor: PC Pentium and higher; RAM: 64 MB and more (recommended 128 MB); Disk space: 40 MB and more