

# QUALITY DATA FOR VERSATILE USE

T-MAPY spol. s r.o. company offers a wide range of quality geographic data that may be used for geographic information systems and many other applications, such as navigation systems, vehicle monitoring systems, etc.

The sources for the data are mostly maps produced by the cartographic publishing house SHOCart Zlín. These maps ensure detailed, accurate and up-to-date information. You can select from raster or vector data, data of your town or city, region, Czech Republic, Europe or the whole world. In addition, you can select the system of coordinates (the systems S-42, S-JTSK, and UTM/WGS as a standard) and the data output format.

Our offer of geographic data is here for you. The only thing you need to do is make your choice.



T-MAPY

## Geographic Data



### Vector Data:

- CR – city plans, scale 1:10 000 – selected layers
- Czech Republic, scale 1:50 000 – basic topography
- Czech Republic, scale 1:50 000 – thematic content
- Czech Republic, scale 1:50 000 – hypsometry

These are vector geographic databases complemented with attributive information. The data allows dealing with network and topological tasks. The standard format for vectors is shapefile; DMT in the grid module is available in the format ArcInfo Grid, in ASCII, or in other formats.

### Raster Data:

- Czech Republic – city plans, scale 1:10 000
- Czech Republic, scale 1:50 000 – basic topography
- Czech Republic, scale 1:50 000 – shaded relief
- Czech Republic, scales 1:200 000, 1:500 000
- Slovakia, scale 1:250 000
- Central Europe, scale 1:1 000 000
- Europe, scale 1:5 000 000

These are seamless raster maps with georeferences, saved as a catalogue of raster files. The standard format is TIFF. However, other formats (BMP, JPEG, etc.) can be supplied upon request.

T-MAPY spol. s r.o.  
Czech Republic

e-mail:  
marketing@tmapy.cz  
Internet site:  
<http://www.tmapy.cz/>

Hradec Králové  
Nezvalova 850  
500 03 Hradec Králové

Phone: +420-495513335  
Fax: +420-495513371

Praha  
Brabcova 1159/2  
147 00 Praha 4

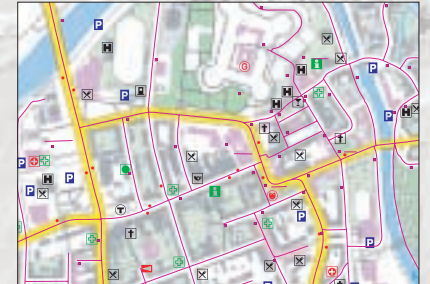
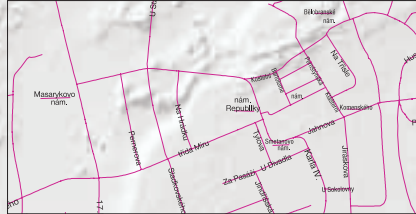
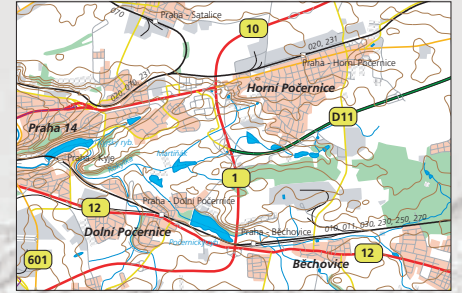
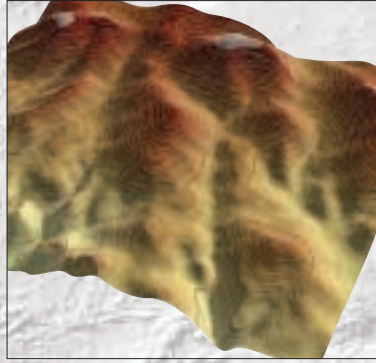
Phone: +420-241432999  
Fax: +420-241433872

<http://www.tmapy.cz/>

## Vector Data

### Czech Republic in scale 1:50 000

- Database of basic topography (layers: land use, area and point localities, watercourses and water bodies, roads, railways including railway stations)
- Thematic content (layers: environment protection, caravan site, castles, petrol stations, cycling routes)
- Hypsometry of CR – contour lines by 10 m and digital elevation model with spatial resolution of 40 m; possibility of creating DEM with spatial resolutions of 10 and 5 m, respectively.



### CR - city maps in scale 1:10 000

- Street description definition points, street network, thematic information (point marks)

## Raster Data

### CR - city maps in scale 1:10 000

- 126 cities and towns over 10,000 inhabitants and other selected places

### Czech Republic in scale 1:50 000

- Seamless map of basic topography and hypsometry



### Czech Republic in scale 1:200 000, 1:500 000

- Seamless map of basic topography



### Slovakia in scale 1:250 000

- Seamless map of basic topography



### Central Europe, Europe in scales 1:1 000 000 and 1:5 000 000

- Road map for basic navigation

## Other services

- Custom processing of geographic data - data collection in the field, digitalisation of maps, vectorisation, elaboration of rasters, data conversions, analyses (both 2-D and 3-D), etc.
- Software for work with geographic data - ESRI and T-MAPY products
- Software development
- Expertise on information systems and other related services